



**Favorite
Foods**

Get the independent edge!

Baking Items



Favorite Foods, Inc.

29 Interstate Drive

Somersworth, NH 03878

Phone (603) 692-4990

Fax (603) 692-4993



Drops, Chips & Chunks

Used as inclusions in cookies, bars and other bakery items.

Also smaller sizes are used as toppings or decorations.

1M = 1000 per lb, 2M = 2000 per lb, 4M = 4000 per lb., etc.

(Higher number means smaller pieces and more pieces per lb)

1M is the standard Nestle morsel size and 4M are often referred to as Mini

3680298 **Green Mint flavored Drops Guittard • 1M • 25 lb**

4040100 **Butterscotch Drops Guittard • 1M • 25 lb**

4060007 **Chocolate Drops Barry Callebaut • 1M • 10 lb**

4060008 **Chocolate Drops • 1M • 25 lb**

4060010 **Chocolate Drops • 2M • 25 lb**

4060009 **Semisweet Drops • 10M • 30 lb**

4060015 **Chocolate Drops • 4M • 25 lb**

4060033 **Chocolate Chunks White Chocolate • 30 lb**
300 count - made with pure cocoa butter, all natural

4060037 **Chocolate Chunks Semi-Sweet • 300 count • 50 lb**

4060455 **Cocoa Drops • 4M • 25 lb • Made with cocoa powder**

4060440 **Cinnamon Drops • 5M • 10 lb**

4060041 **Chunk, K895 Semi-Sweet (Flake) • 50 lb**
These large random shaped chunks are thin and often used in chocolate chip ice cream

Cocoa Powder & Unsweetened Chocolate

Great for baking applications which call for unsweetened chocolate - brownies, ice cream, frosting.

4060090 **Unsweetened/Liquor Chocolate • 40 lb**

These wafer-shaped pieces are unsweetened 100% chocolate and are often used for brownies and frosting.

4060109 **Unsweetened/Liquor Chocolate • 10 lb**

4060503 **"Breakfast" Cocoa Powder 22-24% • 5 lb**

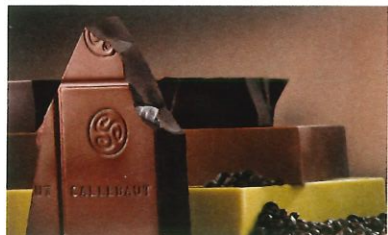
"Breakfast cocoa powder" is a term used in the industry to indicate a high-quality, high-fat cocoa powder which is used to make hot chocolate for breakfast! Dark red brown color, Dutch-processed, imported from Holland.

4060505 **"Breakfast" Cocoa Powder 22-24% • 25 lb**

4606507 **Cocoa Powder Bendsorp "Royal Dutch" 22-24% • 50 lb**

This cocoa powder has a reputation as one of the best in the industry. It is a high fat (22/24%) dark red/brown cocoa and good for all applications which call for cocoa powder. Bulk cocoa, dutch-processed, imported from Holland.





Specialty Chocolate Items

- 4060024 **Callebaut 53% Semi-Sweet Callets** • 2/22 lb
A high quality Belgian dark chocolate (53% dark) used by pastry chefs & confectioners for applications which call for semi-sweet chocolate.
- 4060025 **Callebaut 70% Bittersweet Callets 70%** • 2/22 lb
This Belgian made chocolate has 70% chocolate so is less sweet. Used by pastry chefs who want a strong chocolate taste.
- 4060047 **Kakao Berlin "Munich" • 55%** • 11 lb
A high quality German made couverture chocolate. It has 55% chocolate content and comes in wafer form so it is easy to measure and melt. Good for all applications which call for dark chocolate
- 4060454 **Chocolate Batons (sticks) 4" for Croissant** • 300 ct
- 4062583 **Cocoa Nibs** • 1kg/2.2 lb
Roasted pieces of cocoa beans
- 3370044 **Hazelnut & Chocolate Spread (Nutella)** • 11 lb pail
A delicious spread of hazelnuts and chocolate - makes a great component in mousse, ganache and frostings as well as used with crepes and toast, etc. All natural and non-GMO.
- Chocolate Ganache** • 18 lb
All natural ready to use



Tart Shells and Other Misc Items

- 4580107 **2" All Butter** • 300 ct
- 4580108 **3.5" All Butter** • 144 ct
- 4580113 **4.13" All Butter** • 105 ct



Contact your sales representative today to place your order! • (603) 692-4990

Confectionery Coatings/EZ melt Chocolates

These coatings are not made with cocoa butter and use a substitute fat so they are easy to melt (in the microwave) and good for dipping, coating and molds; dip strawberries, cookies; Can be melted repeatedly.

- 4060803 **Sparrow Dark Chocolate Pennies** • 22 lb
Imitation Dark chocolate in wafers (pennies). Thinner consistency.
- 4060804 **Sparrow White Chocolate Pennies** • 22 lb
Imitation White chocolate. Thinner consistency. Mix dark & white pennies to make milk!
- 4060800 **Van Leer Snaps - Dark Coating Wafers** • 30 lb
Thicker than pennies
- 4060801 **Van Leer Snaps - White Coating Wafers** • 30 lb
Thicker than pennies
- 4060805 **Van Leer Snaps - Milk Coating Wafers** • 30 lb
Thicker than pennies



Coconut

- 4075351 **Coconut Sweet Shredded** • 5/2 lb
- 4075354 **Coconut Sweet Shredded** • 25 lb
- 4075352 **Coconut Sweet "Snowflake"** • 10 lb
- 4075357 **Coconut Sweet Flake** • 25 lb
- 4075359 **Coconut Macaroon** • 25 lb
- 4075369 **Toasted Coconut** • 25 lb
- Unsweetened Coconut Flakes** • 25 lb



Toppings

Used for decorations on ice cream & bakery items

- 0510334 **Raspberry Sauce (Coulis)** • 2 lb squeeze bottle
- 3680215 **S & M pieces** • 25 lb
Similar to M&M's - candy-coated colored chocolate pieces
- 3680222 **Dark Blossom Curls** • 8.8 lb box
Small uniform curled pieces of chocolate used as a decoration
- 3680233 **Chocolate Shavings - Dark Chocolate** • 4 lb
Random shaped pieces of dark chocolate similar to pencil shavings adds distinction to pastry and baked goods.
- 4060121 **Callebaut Vermicelli** • 4/11 lb
Similar to jimmies/sprinkles but made with Belgian chocolate for a decadent garnish.
- 3680350 **Peanut Brittle** • 6 lb
A crunchy topping with pieces of peanuts and jimmies
- 4060109 **Jimmies, Chocolate (aka Sprinkles)** • 10 lb
- 4060600 **Jimmies, Chocolate** • 25 lb
- 4060307 **Jimmies, Rainbow/Carnival** • 10 lb
colors - white, yellow, purple, pink, green, blue, orange & red
- 4060312 **Jimmies, Rainbow/Carnival** • 25 lb
colors - white, yellow, purple, pink, green, blue, orange & red
- 4060315 **Jimmies, White** • 10 lb
- 4060320 **Jimmies, Pink** • 10 lb

Flavor and Extracts

- 3281129 **Lemon Oil** • 16 oz
- 3281138 **Orange Oil** • 16 oz
- 3281140 **Anise Oil** • 16 oz
- 3290309 **Maple Flavor** • gal
Vanilla Flavoring Clear • gal
Vanilla Baystate • 2x gal
- 4242329 **Vanilla Paste** • 35 oz
All natural superior vanilla extract in paste form for ease of use. Contains vanilla seeds for visual enhancements. Especially good in vanilla ice cream, crème brulee and other cream based products.

Miscellaneous Items

- 3323504 **Milk Powder Blend High Heat** • 50 lb
- 3323506 **Milk Powder Grade A High Heat** • 50 lb
- 4765561 **Rolled Fondant** • 15 lb bucket
White fondant which can be rolled out to cover cakes
- 5280670 **Pastry Bags, 20" Disposable** • 100 ct
Corn Meal • 10 lb



Nuts & Raisins

- 1270450 **Almonds Thick Sliced Natural** • 25 lb
- 1270502 **Whole Natural Almonds** • 30 lb
- 1271155 **Walnut, #13 Small Pieces** • 30 lb
- 1271105 **Walnuts Halves & Pieces** • 25 lb
- 4585197 **Raisins Seedless Midgets** • 30 lb
Walnuts #12 Small Pieces • 30 lb



Seeds

For bread, bagels, and added to other baked goods for improved nutritional benefits.

- 4615255 **Poppy** • 50 lb
- 4615510 **Sesame Natural** • 50 lb
- 4615511 **Sesame Hulled** • 50 lb
Brown Flax • 10 lb
Sunflower Seeds • 50 lb



Spices Bulk

- 3610636 **Cinnamon Ground - Korintje 1.75%** • 25 lb
Cinnamon Ground - Korintje 1.75% • 6x5 lb
- 0816585 **Onion Chopped** • 30 lb
- 3620259 **Garlic Granulated** • 55 lb
- 3620260 **Garlic Minced** • 8/16 Mesh • 55 lb
Garlic Powder • 6/5 lb

Baking Items

Cocoa Powder & Unsweetened Chocolate

- 4060503 "Breakfast" Cocoa Powder 22-24% • 5 lb
- 4060505 "Breakfast" Cocoa Powder 22-24% • 25 lb
- 4606507 Cocoa Powder Bendsdorp "Royal Dutch" 22-24% • 50 lb
- 4060090 Unsweetened/Liquor Chocolate • 40 lb
- 4060109 Unsweetened/Liquor Chocolate Known as "Kilby Wafer" • 10 lb

Drops, Chips & Chunks

- 3680298 Green Mint Flavored Drops Guittard • 1M • 25 lb
- 4040100 Butterscotch Drops Guittard • 1M • 25 lb
- 4060037 Chocolate Chunks Semi-Sweet • 50 lb
- 4060033 Chocolate Chunks White Chocolate • 30 lb
- 4060008 Chocolate Drops • 1M • 25 lb
- 4060009 Semisweet Drops • 10M • 30 lb
- 4060010 Chocolate Drops • 2M • 25 lb
- 4060015 Chocolate Drops • 4M • 25 lb
- 4060007 Chocolate Drops Barry Callebaut • 1M • 10 lb
- 4060440 Cinnamon Drops • 5M • 10 lb
- 4060455 Cocoa Drops • 4M • 25 lb
- 4060041 Chunk, K895 Semi-Sweet (Flake) • 50 lb

Specialty Chocolate Items

- 4060024 Callebaut 53% Semi-Sweet Callets • 2/22 lb
- 4060025 Callebaut 70% Bittersweet Callets • 2/22 lb
- 4060047 Kakao Berlin "Munich" • 55% • 11 lb
- 4060454 Chocolate Batons (sticks) 4" • 300 ct
- 4062583 Cocoa Nibs • 5 lb
- 3370044 Hazelnut & Chocolate Spread (Nutella) • 11 lb pail
- Chocolate Ganache • 18 lb

Other Chocolate Items

- 4060800 Van Leer Snaps - Dark Coating Wafers • 30 lb
- 4060801 Van Leer Snaps - White Coating Wafers • 30 lb
- 4060805 Van Leer Snaps - Milk Coating Wafers • 30 lb
- 4060803 Sparrow Dark Chocolate Pennies • 22 lb
- 4060804 Sparrow White Chocolate Pennies • 22 lb

Coconut

- 4075359 Coconut Macaroon • 25 lb
- 4075357 Coconut Sweet Flake • 25 lb
- 4075354 Coconut Sweet Shredded • 25 lb
- 4075352 Coconut Sweet "Snowflake" • 10 lb
- 4075351 Coconut Sweet Shredded • 5/2 lb
- 4075369 Toasted Coconut • 25 lb
- Unsweetened Coconut Flakes • 25 lb

Flavor

- 3281129 Lemon Oil • 16 oz
- 3281138 Orange Oil • 16 oz
- 3281140 Anise Oil • 16 oz
- 3290309 Maple Flavor • gal
- 4242329 Paste Vanilla Paste • 35 oz
- Vanilla Flavoring Clear • gal
- Vanilla Baystate • 2 x gal

Nuts & Raisins

- 1270450 Almonds • 25 lb Thick Sliced Natural
- 1271155 Walnut, #13 Small Pieces • 30 lb
- 1271105 Walnuts Halves & Pieces • 25 lb
- 1270502 Whole Natural Almonds • 30 lb
- Walnuts • #12 Small Pieces • 30 lb

Seeds

- 4615255 Poppy • 50 lb
- 4615511 Sesame Hulled • 50 lb
- 4615510 Sesame Natural • 50 lb
- Brown Flax • 10 lb
- Sunflower Seeds • 50 lb

Spices Bulk

- 3610636 Cinnamon Ground Korintje 1.75% • 25 lb
- Cinnamon Ground Korintje 1.75% • 6 x 5 lb
- 3620259 Garlic Granulated • 55 lb
- 3620260 Garlic Minced • 55 lb
- Garlic Powder • 6 x 5 lb
- 816585 Onion Chopped • 30 lb

Tart Shells

- 4580107 2" All Butter • 300 ct
- 4580108 3.5" All Butter • 144 ct
- 4580113 4.13" All Butter • 105 ct

Toppings

- 0510334 Raspberry Sauce (Coulis) • 2 lb squeeze bottle
- 3680233 Chocolate Shavings - Dark Chocolate • 4 lb
- 3680222 Dark Blossom Curls • 8.8 lb box
- 4060121 Callebaut Vermicelli • 4/11 lb
- 4060109 Jimmies, Chocolate (aka Sprinkles) • 10 lb
- 4060600 Jimmies, Chocolate • 25 lb
- 4060320 Jimmies, Pink • 10 lb
- 4060307 Jimmies, Rainbow/Carnival • 10 lb
- 4060312 Jimmies, Rainbow/Carnival • 25 lb
- 4060315 Jimmies, White • 10 lb
- 3680350 Peanut Brittle • 6 lb
- 3680215 S & M pieces • 25 lb

Miscellaneous Items

- 4765561 Rolled Fondant • 15 lb buket
- 3323504 Milk Powder Blend High Heat • 50 lb
- 3323506 Milk Powder Grade A High Heat • 50 lb
- 5280670 Pastry Bags, 20" Disposable • 100 ct
- Corn Meal 20" • 10 lb

